

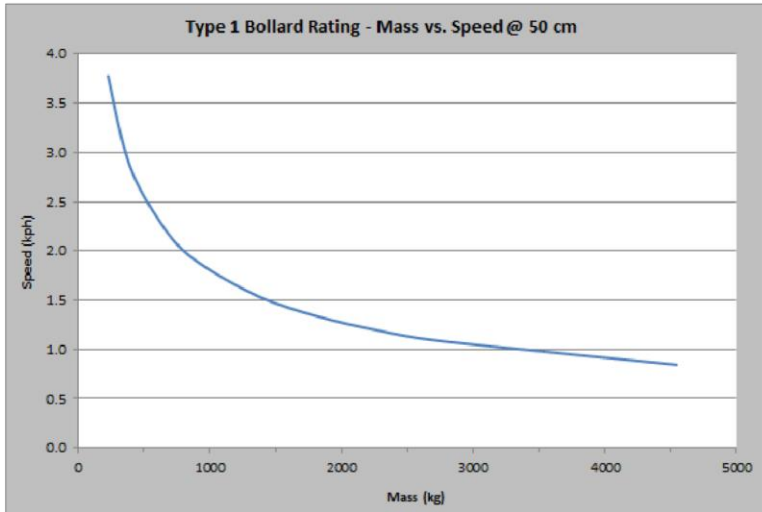


www.slowstop.com

SOFTSTOP[®]

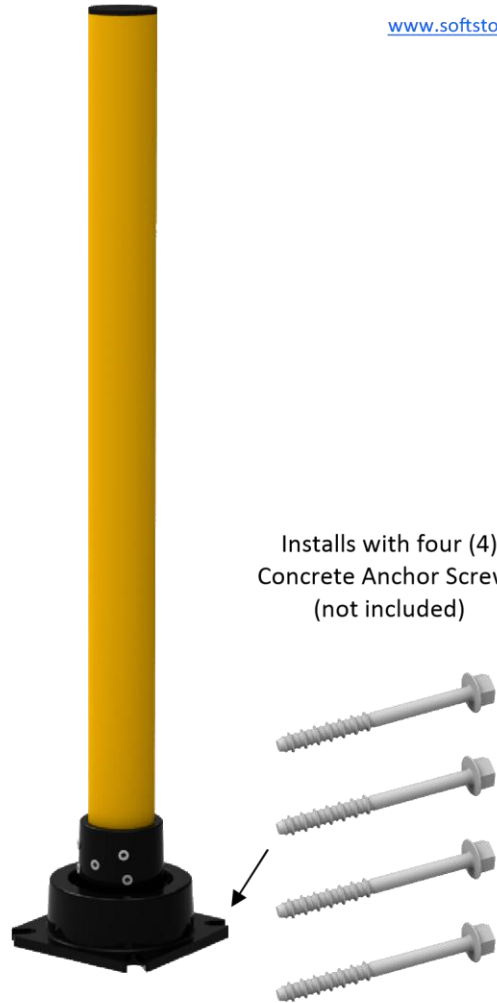
www.softstop.be

SlowStop[®] Rebounding Bollard – Type 1 (SS-T1Y-100)



- Color: RAL 1023 Yellow Bollard on Black Base
- Diameter: 76,1mm (5 mm wall)
- Height: 100 cm
- Set Screws: 5 M12 x 1.75
6mm Hex
- Cap: Black Plastic

Installs with four (4)
Concrete Anchor Screws
(not included)



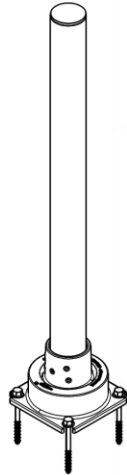
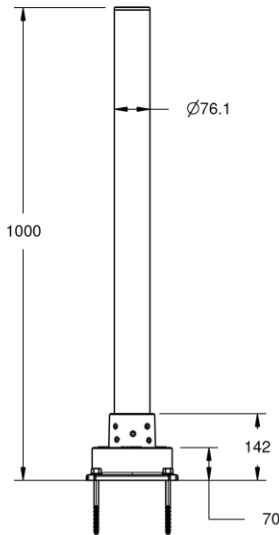
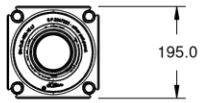
SPECIFICATIONS

- Energy Absorption: 1,621 joules
- Temperature Rating: -40°
- Pipe Coating: Galvanized + Polyester Powder Coat
- Base Coating: Environmentally Friendly Water-Based KTL Coating + Polyester Powder Coat

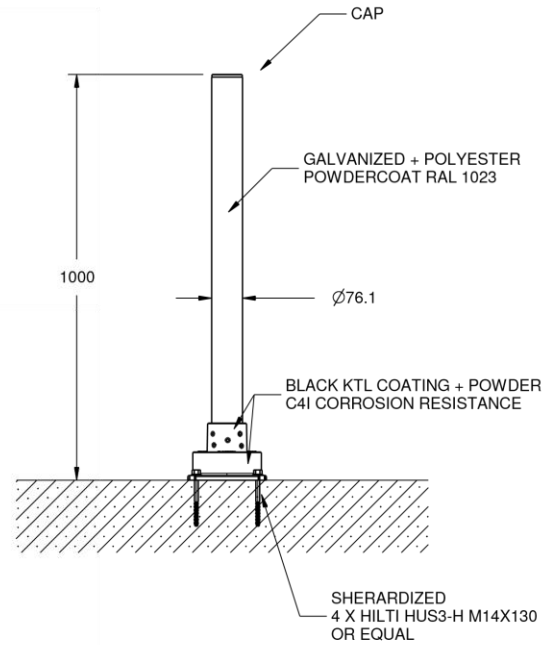
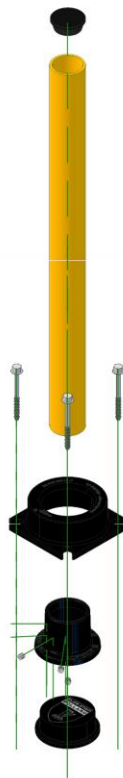
RECOMMENDED USES

- Rack Guarding
- Equipment Guarding
- Drive-Thru Lanes
- Utility Protection
- Access Denial
- Fuel Pump Protection
- Structural Concrete Safe
- Not for Hostile Vehicle Security





5 X M12 X 1.75MM
CUPPED SET SCREWS



* MINIMUM FOUNDATION DEPENDS ON LOCAL
SOIL CONDITIONS, WEATHER, & ENG REQ'TS



IMPACTrecovery
SYSTEMS
"Performance for a Safer Tomorrow"

CONFIDENTIAL & PROPRIETARY

The drawing on this print and the information therewith are property of Impact Recovery Systems, Inc., and shall not be used or discussed in whole or in part without the consent of Impact Recovery Systems, Inc.

4955 STOUT DR. · SAN ANTONIO, TX 78219 · (800) 736-5256

SIZE A	PART NO. SS-T1Y-100	DWG. SLOWSTOP BOLLARD - TYPE 1 X 100CM	REV 1.0
SCALE		IMPACT RECOVERY SYSTEMS, INC.	DATE 25-MAR-2016